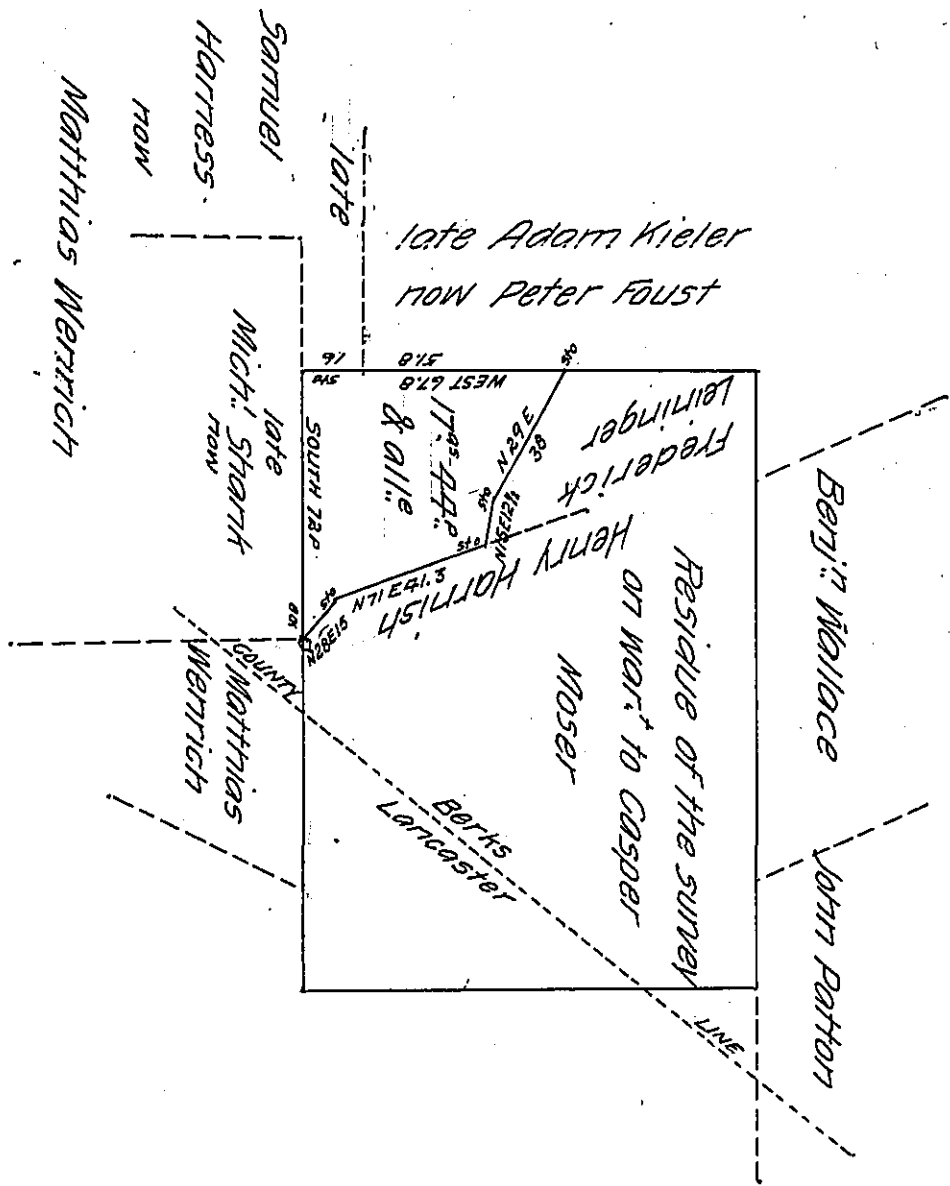


FORM NO 1.



Situate in Heidelberg township Berks County containing seventeen
 acres forty four perches and allowance of 6 Pct. being part of A's 112 1/2 &
 allowance surveyed on warrant of July 20th 1745 granted to Casper Moser
 — the above part surveyed for Matthias Werrich August 25th 1836
 To John Taylor Esquire } Matthias S. Richards D.S.
 Surveyor General of Penna. } of the County of Berks.

IN TESTIMONY that the above is a copy of the original remaining on file in
 the Department of Internal Affairs of Pennsylvania, made
 conformably to an Act of Assembly approved the 16th day of
 February, 1833, I have hereunto set my Hand and caused
 the Seal of said Department to be affixed at Harrisburg,
 this seventh day of March 1907

Lucas R. Brown
 Secretary of Internal Affairs.